

Specialized impact tool maker of JAPAN

OSAKADA TOOL Corp.

URL <http://www.osakadatool.co.jp>



Company Name / OSAKADA TOOL Corp.

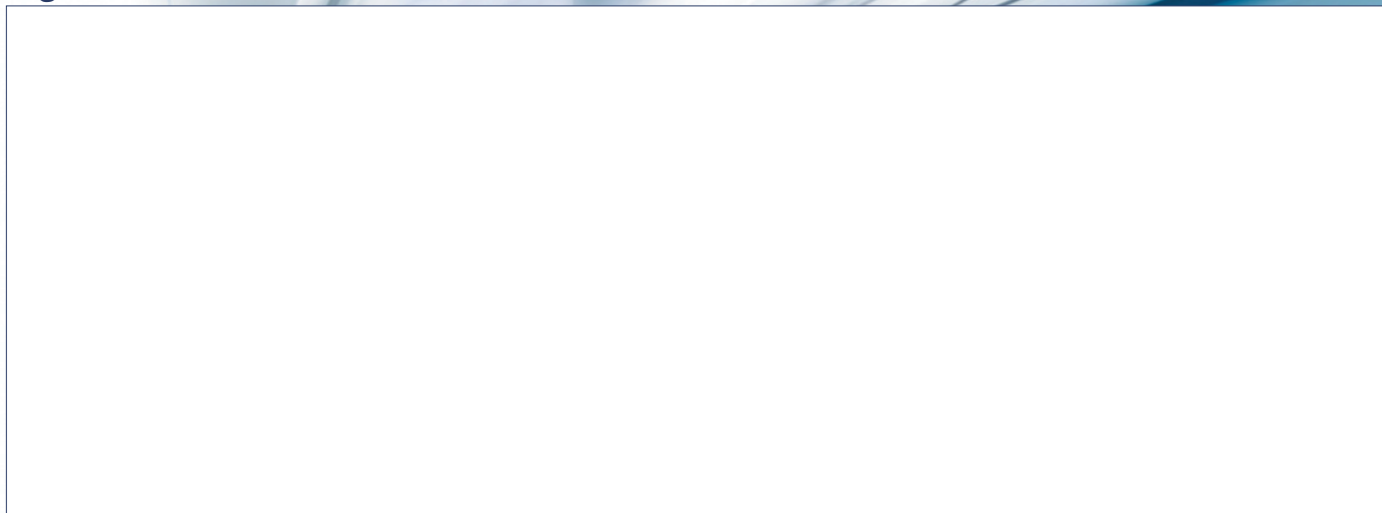
Address / 135-1 Narabarashimo, Mimasaka-shi,
Okayama 707-0024, JAPAN

TEL: +81-868-72-1466

FAX: +81-868-72-4410

URL: <http://www.osakadatool.co.jp/en/>

Agent



Specialized impact tool maker of JAPAN

OSAKADA TOOL Corp.

OSAKADA TOOL Corp.

CONTENTS

1~3	HYDRAULIC BREAKER TOOLS
4	TCA-7/TCB-130-AA-1.3B/AA-3
5	CB-20•CB-30
6	TPB-40•TPB-73/CB-35•DIG-9
7	ELECTRIC HAMMER TOOLS
8	AA-0B•NC-0S•AA-00SP•FC-01SA
9	TAPER ROD•BIT for ROCK DRILL 19x22 ADAPTOR/ROCK BUSTER
10~11	CASE of WARRANTY CLAIMS for INCIDENTS INVOLVING HYDRAULIC CHISELS
12	IN ORDER TO PREVENT ACCIDENTS

Company Profile

Company Name / OSAKADA TOOL Corp.
Address / 135-1 Narabarashimo, Mimasaka-shi,
Okayama 707-0024, JAPAN
TEL: +81-868-72-1466
FAX: +81-868-72-4410
URL: <http://www.osakadatool.co.jp/en/>

Establishment / 1967

"OSAKADA TOOL" is specialized in manufacturing high quality breaker chisels. Since our company was founded in 1967, we have been developing and producing our products. Our chisels are integrally manufactured and each process is strictly controlled from the beginning to the final processing.

Please pay special attention to the following points:



To use your chisel as long as possible, please do the following

- Inspect your chisel before each use.
- Lubricate your chisel properly.
- Warm up your chisel when it is cold outside.
- When you hear a strange sound, stop using your chisel immediately.



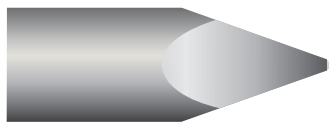
Safety precautions

Please observe the following when you use the product:

- Please wear protective safety equipment such as shoes, gloves, a cap and glasses.
- Please post the safety instructions for the proper use of the chisel in a visible place.
- In the case of chisel repair, make sure not to decrease the durability, hardness and performance characteristics of the chisel.
- When you attach or remove your chisel, make sure that no one gets hurt or nothing is damaged during the procedure.

HYDRAULIC BREAKER TOOLS

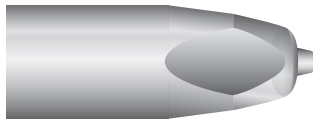
POINT STYLE



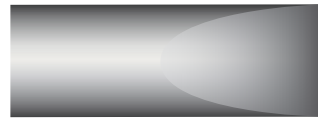
MOIL POINT-P



BLUNT-FE



HARD CORE-PC



CHISEL
(CROSS CUT)-FX

■ OKADA

MODEL	DIAMETER		OVERALL LENGTH		NOTE
	mm	inch	mm	inch	
TOP25/OKB301	50	1.97	500	19.7	
OKB-302	61	2.4	550	21.7	
TOP30/35/OKB302A	61	2.4	600	23.6	
TOP45/OKB303A,B	68	2.7	700	27.6	
TOP45B	68	2.7	700	27.6	
TOP60/60B/OKB305	74	2.9	900	35.4	
OKB-304	74	2.9	700	27.6	
OKB-304B	74	2.9	700	27.6	
TOP90	98	3.9	925	36.4	
TOP100/OKB308	110	4.33	1000	39.4	
OKB310	122	4.8	1100	43.3	
TOP-200	125	4.9	1200	47.2	
OKB-312/312B	130	5.1	1150	45.3	
TOP-210/205	135	5.3	1200	47.2	
OKB-316	140	5.5	1300	51.2	
OKB-318	150	5.9	1400	55.1	
TOP-300	155	6.1	1400	55.1	
TOP-400	170	6.7	1580	62.2	
OKB-324	170	6.7	1600	63	
OKB-324A	170	6.7	1600	63	

HYDRAULIC BREAKER TOOLS

■ TOKU

MODEL	DIAMETER		OVERALL LENGTH		NOTE
	mm	inch	mm	inch	
TNB-08	40	1.57	460	18.1	
TNB-1M	45	1.77	470	18.5	
TNB-2M	50	2.0	500	19.7	
TNB-3M	58	2.28	600	23.6	
TNB-3MB	58	2.28	600	23.6	
TNB-4M	64	2.5	650	25.6	
TNB-5M/6M	75	3.0	750	29.5	
TNB-6E	95	3.75	800	31.5	
TNB-7J	105	4.13	1000	39.4	
TNB-100	115	4.5	1100	43.3	
TNB-141	135	5.3	1200	47.2	
TNB-151	135	5.3	1200	47.2	
TNB-190	140	5.5	1200	47.2	
TNB-230	146	5.75	1200	47.2	
TNB-310	160	6.3	1360	53.5	

■ NPK

MODEL	DIAMETER		OVERALL LENGTH		NOTE
	mm	inch	mm	inch	
GH-06	42	1.65	490	19.3	
GH-07	47	1.85	520	20.5	
PH1	57	2.24	600	23.6	
PH2	66	2.6	650	25.6	
PH3	76	2.99	750	29.5	
PH4	86	3.39	850	33.5	
GH-6	106	4.17	1000	39.4	
GH-9	126	4.96	1100	43.3	
GH-10	135	5.31	1200	47.2	
GH-12	146	5.75	1300	51.2	
GH-15	156	6.14	1400	55.1	
GH-18	165	6.5	1600	63	

HYDRAULIC BREAKER TOOLS

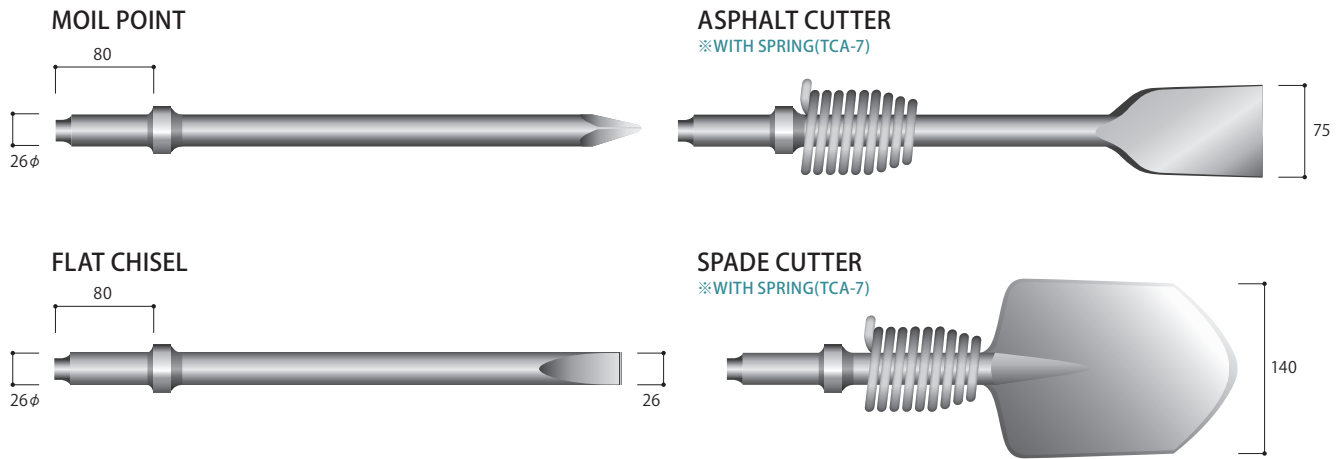
■ FURUKAWA

MODEL	DIAMETER		OVERALL LENGTH		NOTE
	mm	inch	mm	inch	
FX25	45	1.77	500	19.7	
FX35	52	2.05	520	20.5	
FX45	60	2.36	570	22.4	
FX55	68	2.68	600	23.6	
F-6	75	2.95	750	29.5	
F-9	90	3.54	850	33.5	
F-12	105	4.13	1100	43.3	
F-19	119	4.69	1200	47.2	
F-22	135	5.31	1250	49.2	
F-27	140	5.51	1350	53.1	
F-35	150	5.91	1400	55.1	
F-45	165	6.5	1500	59.1	
FX125	109	4.29	1070	42.1	
FX175	115	4.53	1110	43.7	
FX275	135	5.31	1310	51.6	
FX375	155	6.1	1405	55.3	
FX475	170	6.69	1510	59.4	

■ KONAN

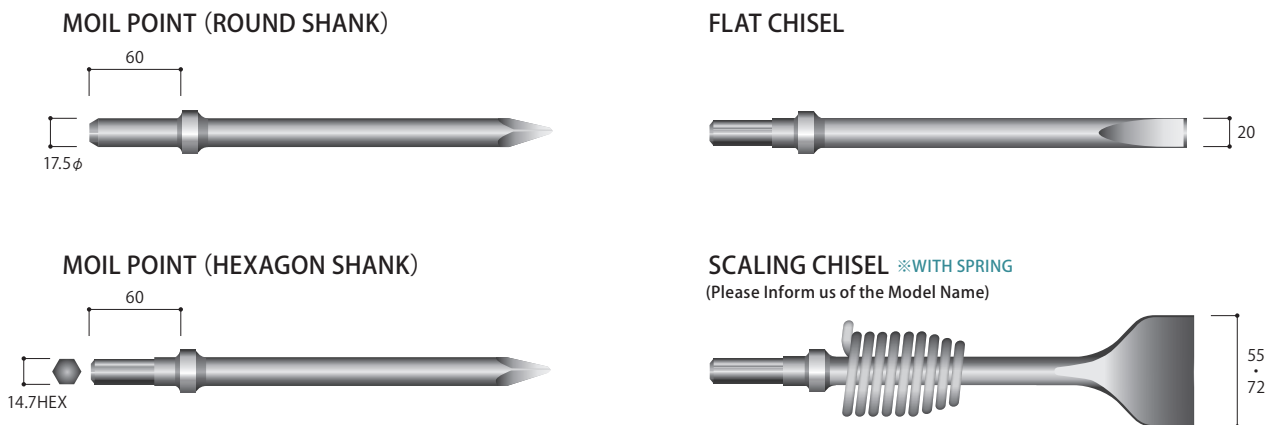
MODEL	DIAMETER		OVERALL LENGTH		NOTE
	mm	inch	mm	inch	
MKB-100M	45	1.77	450	17.7	
MKB-150M	55	2.17	600	23.6	
MKB-300M	70	2.76	750	29.5	
MKB-500N	80	3.15	900	35.4	
MKB-900N	100	3.94	1000	39.4	
MKB-1400V	130	5.12	1200	47.2	
MKB-1500V2	135	5.31	1200	47.2	
MKB-1700V2	137	5.39	1300	51.2	
MKB-2100V	150	5.91	1300	51.2	
MKB-2500V	160	6.3	1350	53.1	
MKB-3000V	165	6.5	1400	55.1	
MKB-4000V	180	7.09	1600	63	

CA-7 • CB-10



SHANK SIZE (mm)	OVERALL LENGTH (mm)	COMPATIBLE MODELS	
		TOKU	NKS
R26 × 80	400	TCA-7	CB-10
	450	TCB-130B	
	600		
	800	NPK	NISSHIN
	1000 1200	CB-15A	CB-10

AA-1.3B • AA-3 • AA-75



SHANK SIZE (mm)	OVERALL LENGTH (mm)	COMPATIBLE MODELS		
		TOKU	NKS	NPK
R17.5 × 60	250	AA-1.3B	NC-1S ~ NC-4S	AA-1SP
	300	AA-3B	AA-10S AA-15S	AA-2SP
	350	TYC-6B	AA-20S AA-30S	AA-3SP
H14.7 × 60	400	NISSHIN		AA-75SP
	500	AC-2P ~ AC-4P		AA-3XSP
	600			AA-15XSP

CB-20

MOIL POINT



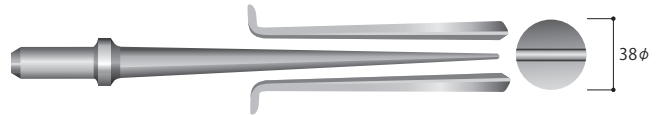
ASPHALT CUTTER



FLAT CHISEL



WEDGES AND SHIMS (38φ×450・600L)



SHANK SIZE (mm)	OVERALL LENGTH (mm)	COMPATIBLE MODELS	
		TOKU	NKS
R30 × 87	400	TCB-200	CB-20
	450	NPK	NISSHIN
	600	CB-20A	CB-20

CB-30

MOIL POINT



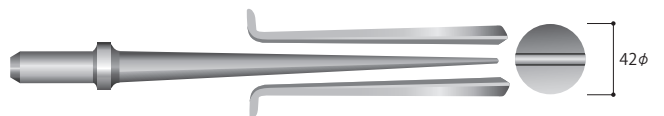
ASPHALT CUTTER



FLAT CHISEL



WEDGES AND SHIMS (42φ×470・600L)



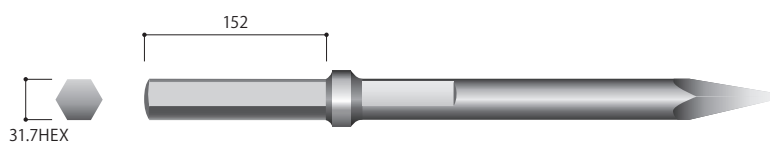
SHANK SIZE (mm)	OVERALL LENGTH (mm)	COMPATIBLE MODELS	
		TOKU	NKS
R35 × 87	470	TCB-300	CB-30
	600	NPK	NISSHIN
	800	CB-30A	CB-30

TPB-40



SHANK SIZE (mm)	OVERALL LENGTH (mm)	DIAMETER	COMPATIBLE MODELS
25.4H × 108 (1 × 4 - 1/4)	450 600	30φ	TPB-40 (TOKU)

TPB-73/CB-35



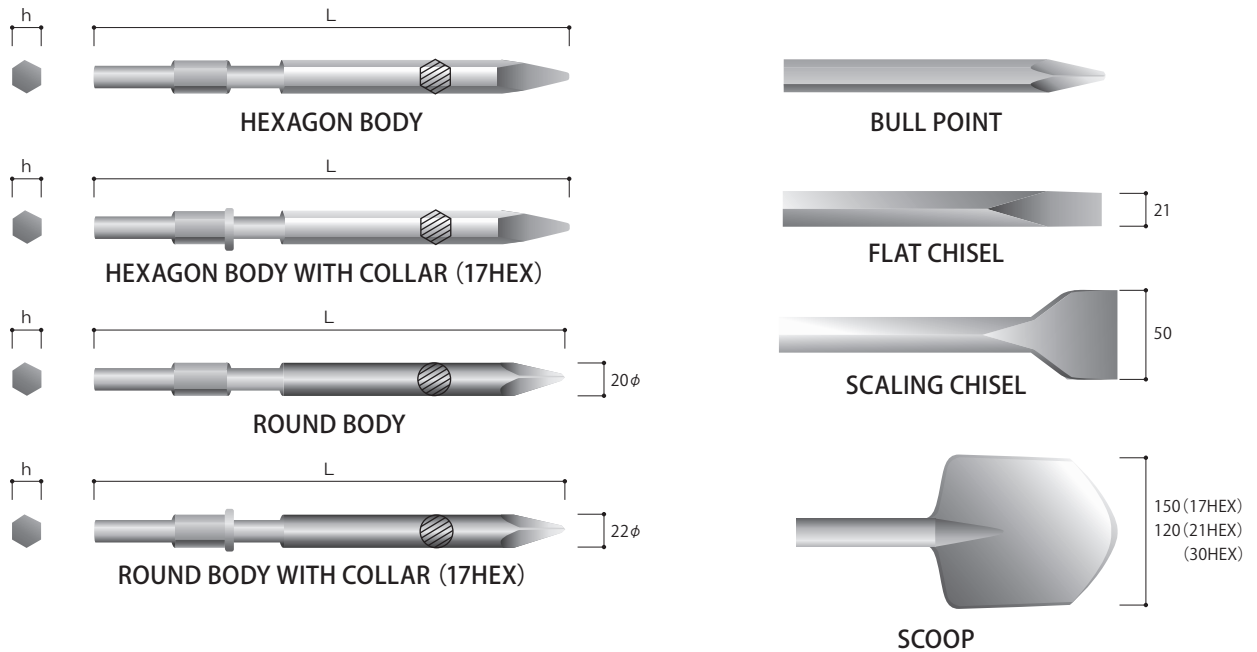
SHANK SIZE (mm)	OVERALL LENGTH (mm)	DIAMETER	COMPATIBLE MODELS	
			TOKU	NKS
31.7H × 152 (1 - 1/4 × 6)	530 600	36φ	TPB-60 TPB-73 TPB-90	CB-35

DIG-9



SHANK SIZE (mm)	OVERALL LENGTH (mm)	DIAMETER	COMPATIBLE MODELS
22H × 83 (7/8 × 3 - 1/4)	435	28φ	DIG-9 (NPK)

ELECTRIC HAMMER CHISEL (17·21HEX)



SHANK SIZE (h)	OVERALL LENGTH (L)	COMPATIBLE MODELS	
		MAKITA	HITACHI
17HEX	280	HR3530, HM0810 HR3811, HR4030C 8500N, HR3520 HR3850, HM0810T 8800N, HM0830	DH40SR, PH-40F H41SA, H45SR PR-25B, DH35 PR-38E, DH40SA DH42, DH45SA H41SA2, DH38SS
	300 (WITH COLLAR)		
	450		
	600		
21HEX	320	HM1201	H50SA H55SB
	450		
	600		

ELECTRIC HAMMER CHISEL (30HEX)

SHANK SIZE (h)	OVERALL LENGTH (L)	COMPATIBLE MODELS	
		MAKITA	HITACHI
30HEX (ROUND BODY 26ϕ)	410	8600S HM1500 HM1303 HM1304 HM1317C	PH65A, PH65SB2 H65SA, H70SA H65SB
	600		
30HEX (ALL HEX BODY)	310	8600N	H90 PH-85

**AA-0B • NC-0S • AA-00SP
AA-00 • FC-01SA**

MOIL POINT (ROUND SHANK)



FLAT CHISEL

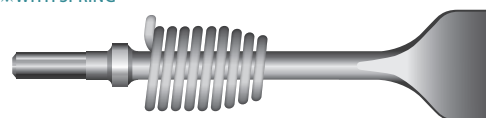


MOIL POINT (HEXAGON SHANK)



SCALING CHISEL

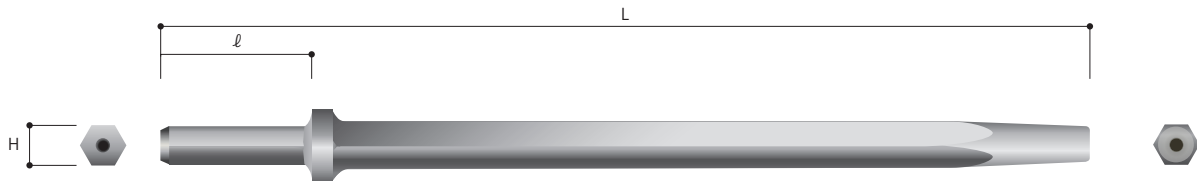
※WITH SPRING



SHANK STYLE	SHANK SIZE H or R × ℓ (mm)	OVERALL LENGTH (mm)	COMPATIBLE MODELS
ROUND SHANK	R15×53ℓ	220	AA-0B (TOKU)
	R12.7×47ℓ	200	NC-0S • NC-0 • NC-000 (NKS)
	R11×35ℓ	215	AA-00SP • AA-0SP (NPK)
	R12.7×46ℓ	200	AA-00 (URYU)
	R14×45ℓ	200	FC-01 • FC-01SA (FUJI)
HEXAGON SHANK	H12.7×53ℓ	220	AA-0B (TOKU)
	H11×47ℓ	200	NC-0S • NC-0 • NC-000 (NKS)
	H11×35ℓ	215	AA-00SP • AA-0SP (NPK)
	H10.5×46ℓ	200	AA-00 (URYU)
	H12×45ℓ	200	FC-01 • FC-01SA (FUJI)

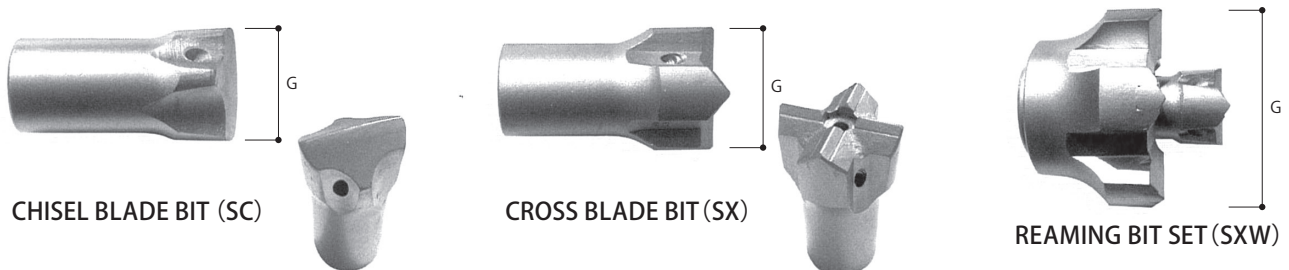
※ Please Inform us of the Model Name, When Ordering the SCALING CHISEL ※WITH SPRING

TAPER ROD for ROCK DRILL



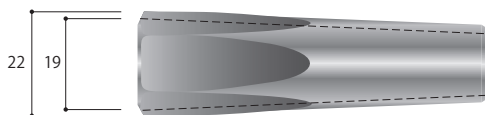
TYPE	SHANK SIZE H × l (mm)	OVERALL LENGTH (L)	COMPATIBLE MODELS
22HS	22H×83l (7/8×3-1/4)	0.3, 0.4, 0.5, 0.6, 0.9 1.0, 1.2, 1.5, 1.8, 2.0 2.1, 2.4, 2.5, 2.7, 3.0	TJ-15/AV TJ-20SBS/AV TJ-26SBS (TOKU)
22HL	22H×108l (7/8×4-1/4)		
			112D (FURUKAWA)

BIT for ROTARY HAMMER & ROCK DRILL



TYPE	G SIZE (mm)	COMPATIBLE TAPER ROD
SC-19	26, 28, 30, 32, 34, 36	19T, 19HS, 19HL
SC-22	28, 30, 32, 34, 36, 38 40, 42, 44, 46, 48	22HS, 22HL
SX-19	26, 28, 30, 32, 34, 36, 38	19T, 19HS, 19HL
SX-22	28, 30, 32, 34, 36, 38, 40 42, 44, 46, 48, 50, 55, 60, 65	22HS, 22HL
SXW-22	60, 65, 70, 80, 90, 100, 120	22HS, 22HL

ADAPTOR for ROTARY HAMMER (19→22)



DESCRIPTION
Bits for 22 taper rods can be used by 19 taper rods with this adaptor.

WEDGES AND SHIMS

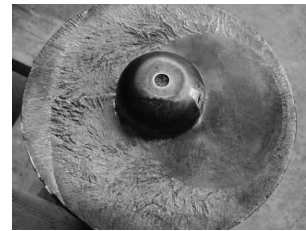
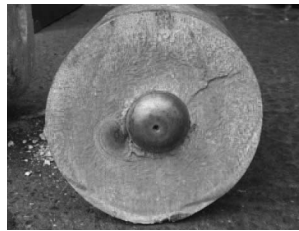
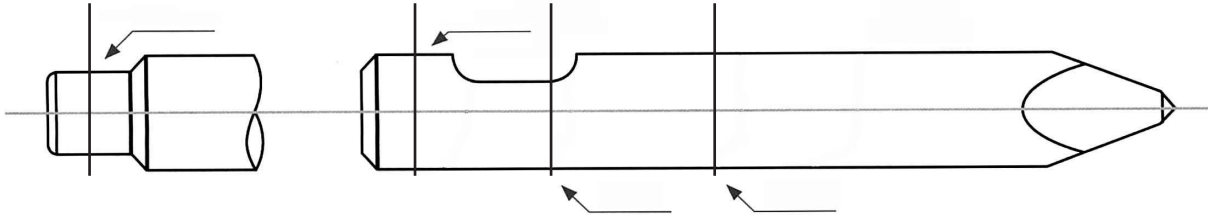


D SIZE (mm)
16, 19, 22, 26, 28, 30, 32, 34, 36, 38

<Cases of Warranty Claims for Incidents Involving Hydraulic Breaker Chisels>

1. Cases subject to coverage by the guarantee

In the case that a fault occurs in the main body of the machinery due to a work related cause within the time period of one week. "↑" shows the point of breaking

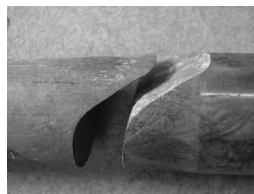
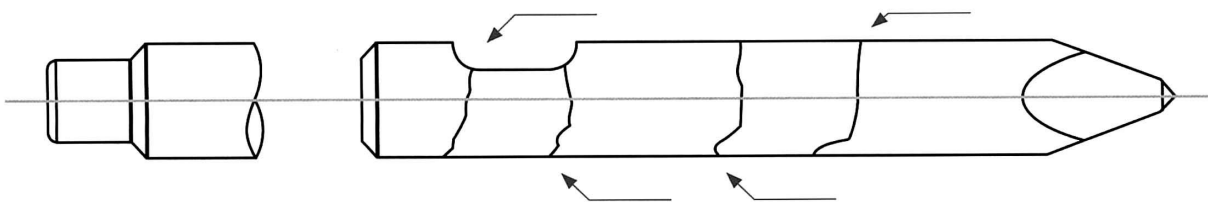


- ! Even in the case of a surface fracture that occurs within one week, the warranty may not be applicable
- ! The warranty is not valid after one week.

2. We are not liable for the following cases

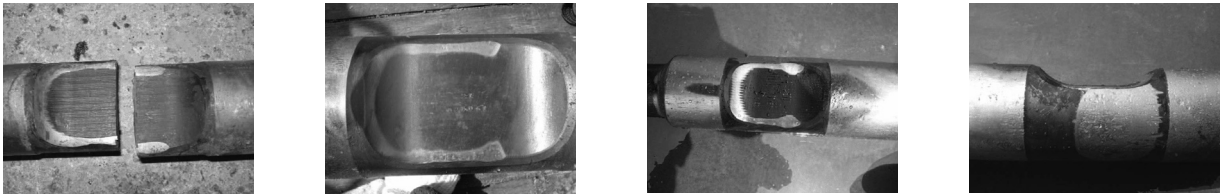
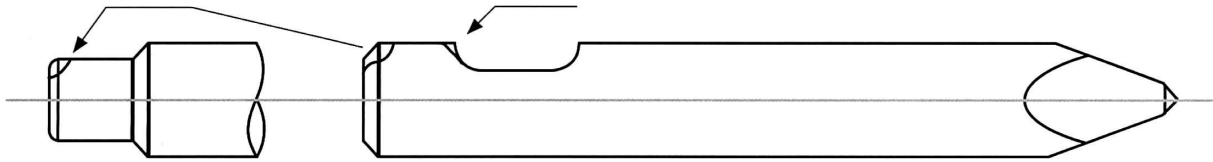
① Break in the Middle of the Tool Body

Graduated breaks in the middle of the body of the machinery or breaks slanted horizontally occur due to the application of excessive force.

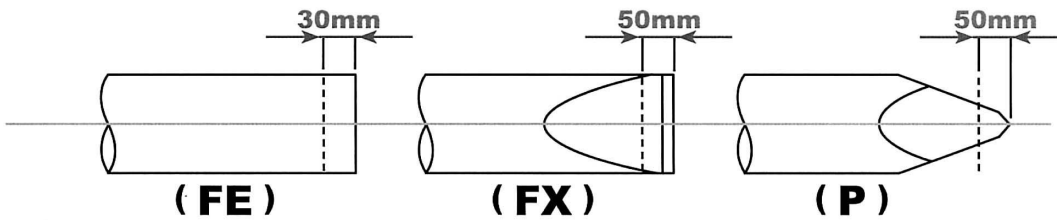


② Chipping

Repetitious blank firing or the use of round bush or chisel holder bush in a state of friction.



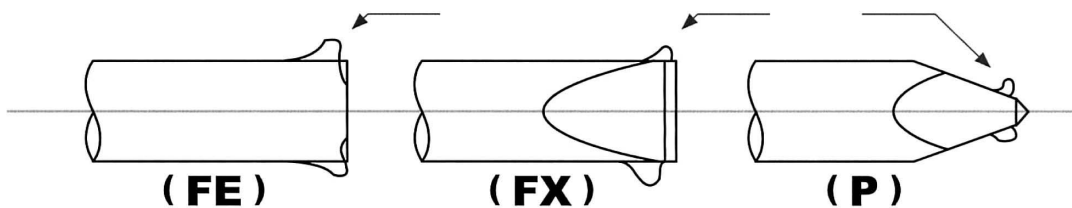
③ Breaks or chipping that occurs after the length of wearing reaches: 50mm or more for the Moyle point (P) and the flat chisel (FX), and 30mm or more for the blunt (FE)



④ Chisels that have been modified or repaired by quenching and welding

⑤ Chisel Tip Wear or Abnormal Friction

The wearing or abnormal friction due to the use of chisel against a very hard material or a long continuous use against the same area.



Points to be Aware of Regarding the Use of Our Chisel

Our chisels have been designed to withstand impact, friction and bending using materials developed jointly with steel companies. In addition, based on many years of experience, we produce products, made from the finest materials and are subjected to a careful heat-treatment and hardness test.

Though we have the utmost confidence in the reliability and durability of our chisel, accidents may occur under the following conditions.

In order to prevent accidents

Use Properly

